



Automated Benchmarking

A program from AEP Ohio and Columbia Gas

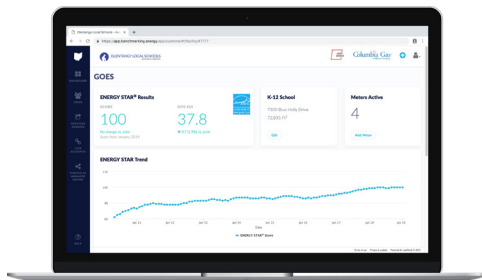
This easy to use data-driven building management tool makes enrollment and effective data usage simple.

Available for all AEP Ohio and Columbia Gas Business Customers.

A Powerful Portfolio Management Tool

Did you know that buildings consistently benchmarked over a four-year period average 2.4 percent in annualized cost or energy savings? Now you can compare, track and manage your energy use with ease: the no cost Automated Benchmarking Program provides your building's energy data—visualized in interactive charts and graphs—and establishes an ENERGY STAR® profile so you can

benchmark your energy performance against similar buildings across the country. All you have to do is sign up!



Benefits

- 36 months of historical AEP Ohio and Columbia Gas usage data and automatic monthly updates (no monthly data entry needed after registering)
- Data entry options to capture energy or water usage from outside of AEP Ohio and Columbia Gas, so all utilities can be analyzed in one place
- An automated ENERGY STAR score for many commercial buildings or an Energy Utilization Index (EUI) for all others
- Interactive charts to highlight usage anomalies and trends
- Data to inform, prioritize and track upgrades for improved building performance

Basics

Getting started is easy. Be prepared with two utility bills—one current and one previous—from both AEP Ohio and Columbia Gas, and property details such as square footage, facility type, year constructed, and an occupancy estimate. Visit [Benchmarking.Energy](https://www.benchmarking.energy) to enroll.

Contacts

Visit <https://www.AEPOhio.com/benchmark> to learn more. Contact the program team at support@benchmarking.energy or the program lead, Rick Sullivan at (330) 438-7825 or RWSullivan@aep.com, with any questions.



Step 1
Establish an account.



Step 2
Agree to the Terms and Conditions (most importantly, confirm you are an authorized account representative)



Step 3
Connect with your AEP Ohio and Columbia Gas accounts



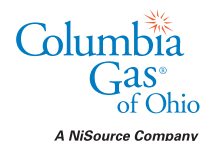
Step 4
Provide building details, like square footage, to establish an ENERGY STAR score.



Step 5
See how your building is performing and use data to track and manage energy usage.



An AEP Company



A NiSource Company